

# PLAYGUARD<sup>®</sup>

SAFETY SURFACING

ecore

715 FOUNTAIN AVENUE  
 LANCASTER, PA 17601  
 TOLL FREE: 1-800-851-4746  
 PHONE: (717)295-3400  
 FAX: (717)295-3414  
 www.playguardsurfacing.com

**NOTE:** FILLER TO PENETRATE INTO OPENING 1/2" MIN. FILLER TO EXTEND ABOVE TILE LINE BY 1/8" AND BE STRUCK OFF IN A UNIFORM FASHION.

BACKFILL ALL CUTOUTS AROUND PLAY STRUCTURE SUPPORTS AND OTHER PENETRATIONS WITH FILLER COMPOUND

PLAYGUARD TILE, CUT TILES ALONG PERIPHERY AND PENETRATIONS AS REQUIRED.

**NOTE:** TILE, GEOTEX AND FOOTER MUST BE CLEAN AND DRY WHEN APPLYING THE ADHESIVE.

TAMP IN BACKFILL, SLOPE TO MATCH EXISTING GRADE, PLACE SOD OR SEED GRASS. KEEP BACKFILL SLIGHTLY HIGHER THAN TILE ELEVATION TO ALLOW FOR SETTLING.

TYPICAL PLAY STRUCTURE SUPPORT

CUT PLAYGUARD AROUND PENETRATIONS AS REQUIRED. MAX. CLEARANCE NOT TO EXCEED 1/4".

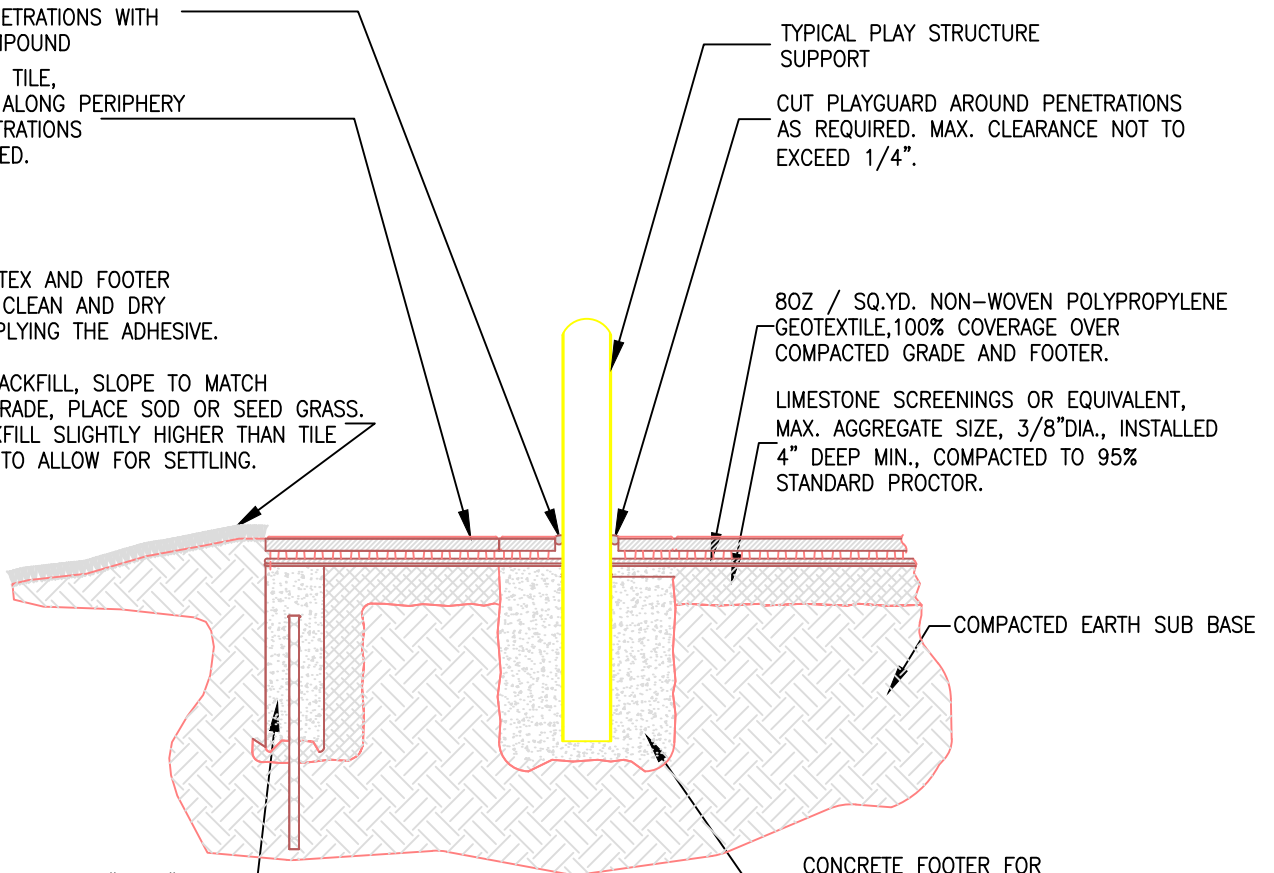
80Z / SQ.YD. NON-WOVEN POLYPROPYLENE GEOTEXTILE, 100% COVERAGE OVER COMPACTED GRADE AND FOOTER.

LIMESTONE SCREENINGS OR EQUIVALENT, MAX. AGGREGATE SIZE, 3/8" DIA., INSTALLED 4" DEEP MIN., COMPACTED TO 95% STANDARD PROCTOR.

COMPACTED EARTH SUB BASE

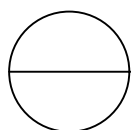
CONCRETE FOOTER, 6" X 18" TYP. FOOTER DEPTH TO CONFORM TO LOCAL FREEZE/THAW GUIDELINES.

CONCRETE FOOTER FOR STRUCTURE SUPPORT POST



**NOTES:**

1. INSTALLATION TO BE COMPLETED IN ACCORDANCE WITH MANUFACTURER'S SPECIFICATIONS.
2. DO NOT SCALE DRAWINGS.
3. COLOUR TO BE CONFIRMED WITH OWNER PRIOR TO INSTALLATION.



BELOW GRADE, CONCRETE FOOTER W/ LOOSE BACKFILL

PLAYGUARD